

A Tool for Intersecting Data and Student Voices

Listen to Me

Community College Students
Tell Us What Helps Them Persist



INTRODUCTION

Community colleges across the country are working toward redesigning the student experience utilizing the guided pathways framework. Guided pathways is an institution-wide approach to student success that is based on giving students clear, coherent, and structured educational experiences that build in a variety of academic and nonacademic supports. The pathways framework includes implementation pillars focused on clarifying the paths (through program mapping), helping students get on a path, helping students stay on their path, and ensuring students are learning. As the student experience is most clearly aligned with the second, third, and fourth implementation pillars, this tool focuses on those parts of the pathways model.

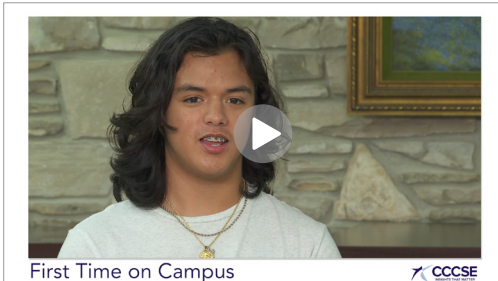
As national thought leaders and colleges continue to refine the implementation of guided pathways, it's essential to understand more fully the triggers that might lead to student attrition as well as the leverage points that can change those outcomes. One of the ways that we can do this is through reviewing *CCSSE* and *SENSE* data related to the pathways pillars while also listening to what students have to say about their experiences in these areas. Note that many of the survey items listed below could appear in more than one of the implementation pillars. For instance, it is important that students receive contextualized academic support as they are working through their gateway courses, but it is also important that those supports continue as students progress into coursework related to their programs of study.

To use this tool at your college, we encourage you to gather a working group to review your college's results for the survey items below and to watch the related video clips. After doing this, have a conversation with your colleagues about whether the data points are where you would like them to be and, if not, what actions you might take to change them. If you would like to interview your own students around these topics, please see the [***Listen to Me: Focus Group Discussion Guides***](#).

GETTING ON A PATH

FIRST TIME ON CAMPUS

What Students Say About It:

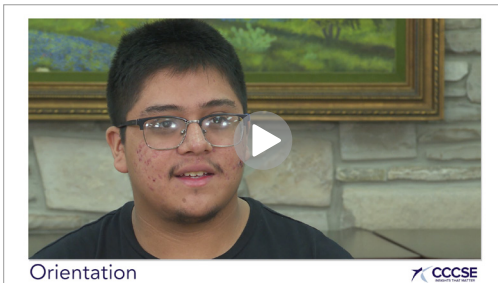


Data to Review:

- » *SENSE* Item 18a

ORIENTATION

What Students Say About It:



Data to Review:

- » *SENSE* Item 11
- » *CCSSE* Item 14

ACADEMIC ADVISING AND PLANNING

What Students Say About It:



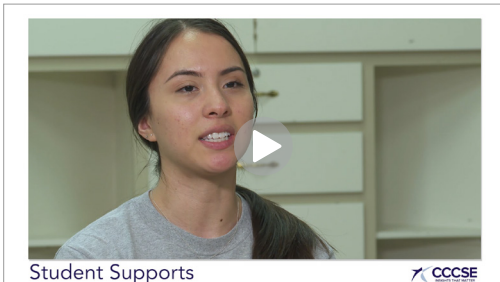
Data to Review:

- » *SENSE* Items 18d–18h, 20a, 20b, 20c, 20j, 22
- » *CCSSE* Item 4l, 11h, 11i, 12a–12c, 12j, 20

GETTING ON A PATH (CON'T)

SUPPORT SERVICES

What Students Say About It:



Data to Review:

- » *SENSE* Item 18d-j, 19e, 20a-k
- » *CCSSE* Item 12a-m, 21, 22

PEER INTERACTIONS

What Students Say About It:



Data to Review:

- » *SENSE* Items 19g-19j
- » *CCSSE* Item 4f-4h, 4r, 12d

STUDENT SUCCESS COURSES

What Students Say About It:



Data to Review:

- » *SENSE* Item 17e, 21
- » *CCSSE* Item 17

STAYING ON THE PATH

ONGOING, INTRUSIVE ADVISING

What Students Say About It:



Data to Review:

- » *SENSE* Item 20a2
- » *CCSSE* Item 12a1

SYSTEMS TO TRACK PROGRESS

What Students Say About It:



Data to Review:

- » *SENSE* Item 20j
- » *CCSSE* Item 12j

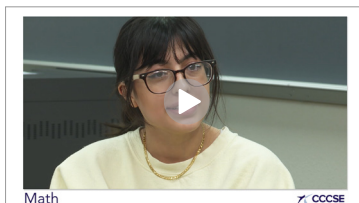
LEARNING ON THE PATH

What Students Say About It:



Data to Review:

- » *SENSE* Items 18k–o, 19a–s, 24a
- » *CCSSE* Items 4a–s, 5a–f, 6a–c, 8a, 10a, 11a–g, 19



EQUITY

An essential condition of the guided pathways model is a commitment to equity in student outcomes—and in order for there to be equity in student outcomes, equity-minded practices must be in place. CCCSE recommends that colleges disaggregate all data by different student groups so that they can understand how different student groups experience college.

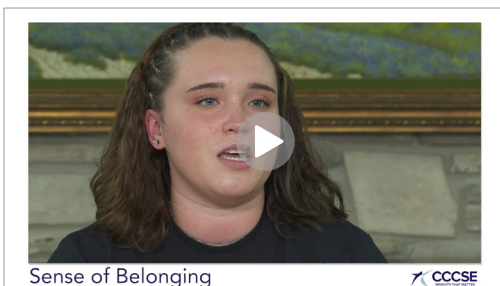
What Students Say About It:



SENSE OF BELONGING

While not an essential condition of guided pathways, ensuring that students feel a sense of belonging on campus does seem to have great value in terms of them establishing relationships with others and seeing the college as a place at which they want to stay and complete their goals.

What Students Say About It:



Data to Review:

- » *SENSE* Items 18a, 18k, 18p, 18q, 18r, 18s

See more [Listen to Me](#) video clips on CCCSE's [YouTube Channel](#).



 info@cccse.org

 www.cccse.org

 [@CommCollSurveys](https://twitter.com/CommCollSurveys)

 [@CCCSEVideo](https://www.youtube.com/@CCCSEVideo)